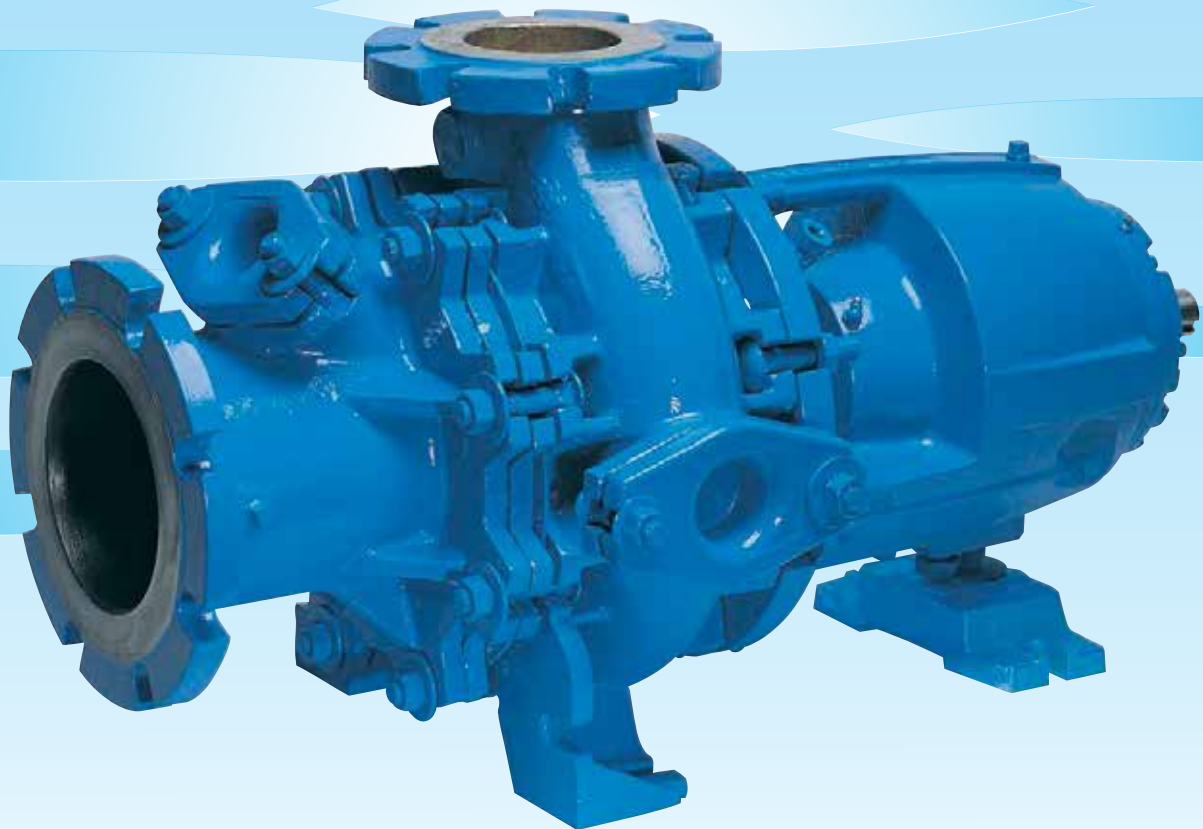


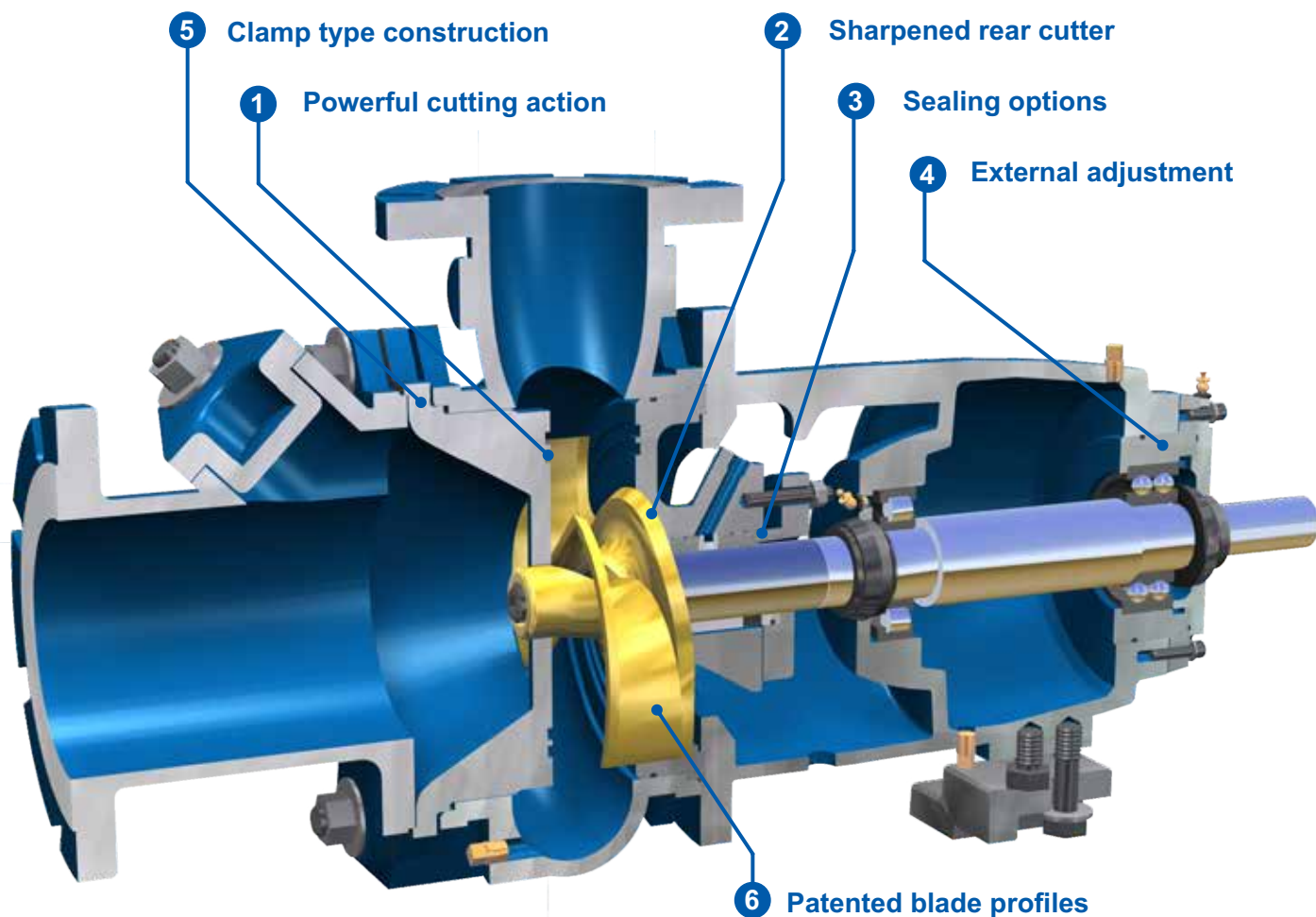
## Chopper Pumps

Model **CHOPX**

**For solids handling requiring  
combined chopping and pumping.**



## ■ Features



- |                                  |  |
|----------------------------------|--|
| <b>1 Powerful cutting action</b> | Powerful cutting action achieved by hardened intake plate with profiled cutter bars acting against sharpened rotating impeller blades.   |
| <b>2 Sharpened rear cutter</b>   | Sharpened rear cutter on impeller shroud sweeps over spiral grooves in the casing backplate to cut and then expel stray material from behind the impeller.   |
| <b>3 Sealing options</b>         | Various mechanical seals available. Packed stuffing box option includes split bronze gland for easy access and a hardened shaft sleeve for minimum maintenance.  |
| <b>4 External adjustment</b>     | Double row thrust bearings mounted in a separate housing for easy installation and external adjustment of impeller clearance.  |
| <b>5 Clamp type construction</b> | Clamp type construction eliminates drilled and tapped holes to permit wider use of abrasion resistant hard metals.   |
| <b>6 Patented blade profiles</b> | Highly engineered and patented blade profiles provide cutting action at the leading edge while ensuring a smooth flow path for the fluid along the rest of the vane. The unique vane design reduces power consumption and improves NPSH. |

## Introduction

CHOPX series Chopper Pumps perform the dual function of cutting and pumping making them ideally suited for applications requiring reduction of solids size and/or protection of downstream equipment.

The proven clamp type construction, common to all Hayward Gordon centrifugal solids handling pumps, permits the entire wet- end to be manufactured in wear-resistant hard metals to ensure maximum component life in abrasive services.

The major performance benefits of the CHOPX design are summarised below:

- Dual function - pumping and cutting
- Solids reduction and blending
- Anti-fouling design
- High efficiency
- Abrasion resistant construction
- Corrosion resistant materials

## Applications

### Waste Treatment

- scum pits
- difficult lift station services
- digester reticulation
- digester scum blankets

### Pulp and Paper

- wood yard and processing plant sumps
- chip and bark handling

### Food Processing and Rendering

- fruit and vegetable waste
- beef, poultry and seafood waste parts
- fleshings, hide, bones, fat

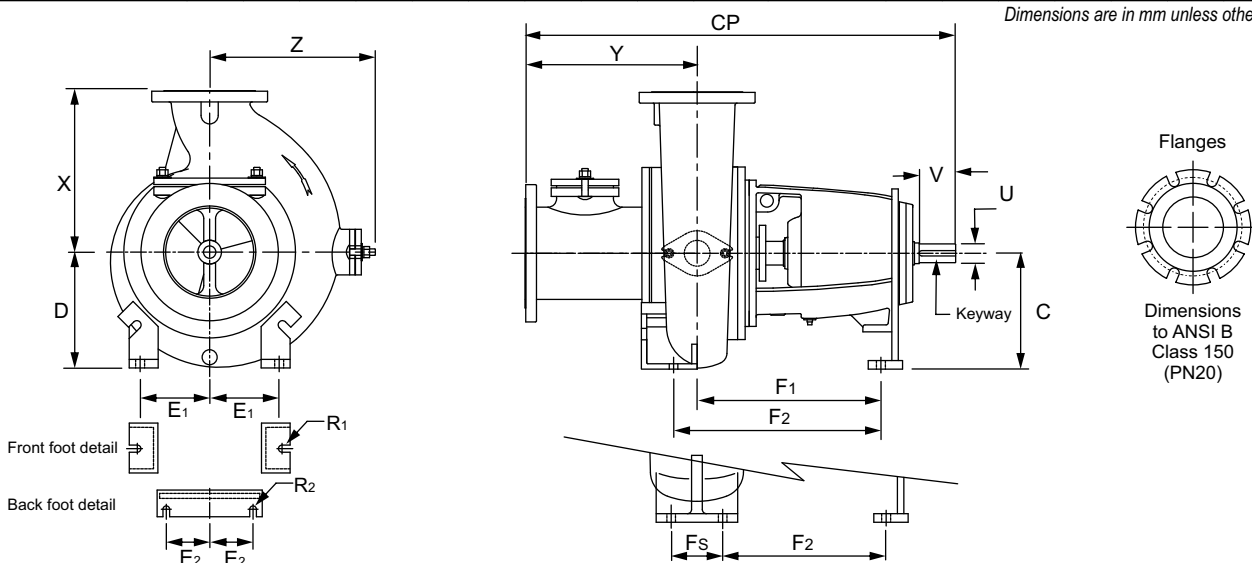
### Miscellaneous

- latex skins
- plastics
- paint sludges
- detergent cakes
- lagoon cleaning

## Dimensions

Pump Model	SUCTION	DISC	CP	C	D	Y	X	V	Z	Imperial dimensions		E <sub>1</sub>	E <sub>2</sub>	R <sub>1</sub>	R <sub>2</sub>	F <sub>1</sub>	F <sub>2</sub>	F <sub>s</sub>	Weight Kg
										U Ø	Keyway								
CHOPX 3-A/B	150	80	785	211	211	297	222	79	162	1.375"	5/16" x 5/16"	146	44	9.5	9.5	340	387		154
CHOPX 4-A/B	150	100	810	211	211	312	248	79	254	1.375"	5/16" x 5/16"	146	44	9.5	9.5	349	387		202
CHOPX 5-B	200	125	965	254	254	389	333	94	325	1.875"	1/2" x 1/2"	165	111	11	11	387.5	432		286
CHOPX 8B/8RB	250	200	1270	343	368	508	476	108	472	2.187"	1/2" x 1/2"	209	165	12.5	12.5	533.5	603		472
CHOPX 8LB	200	200	963	254	343	379	399	94	417	1.875"	1/2" x 1/2"	206	111	12.5	11	397	473		345
CHOPX 10-B	300	250	1270	368	394	495	508	108	508	2.187"	1/2" x 1/2"	308	165	12.5	12.5	543	486	114	690
CHOPX 12-B	350	300	1476	533	533	660	686	152	622	2.625"	5/8" x 5/8"	334	165	14	14	549	470	159	867

Dimensions are in mm unless otherwise stated.



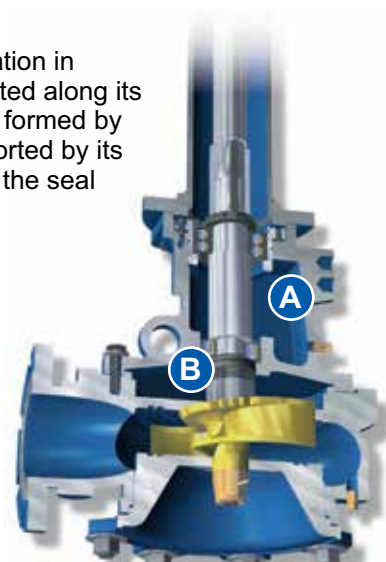
## Vertical configuration



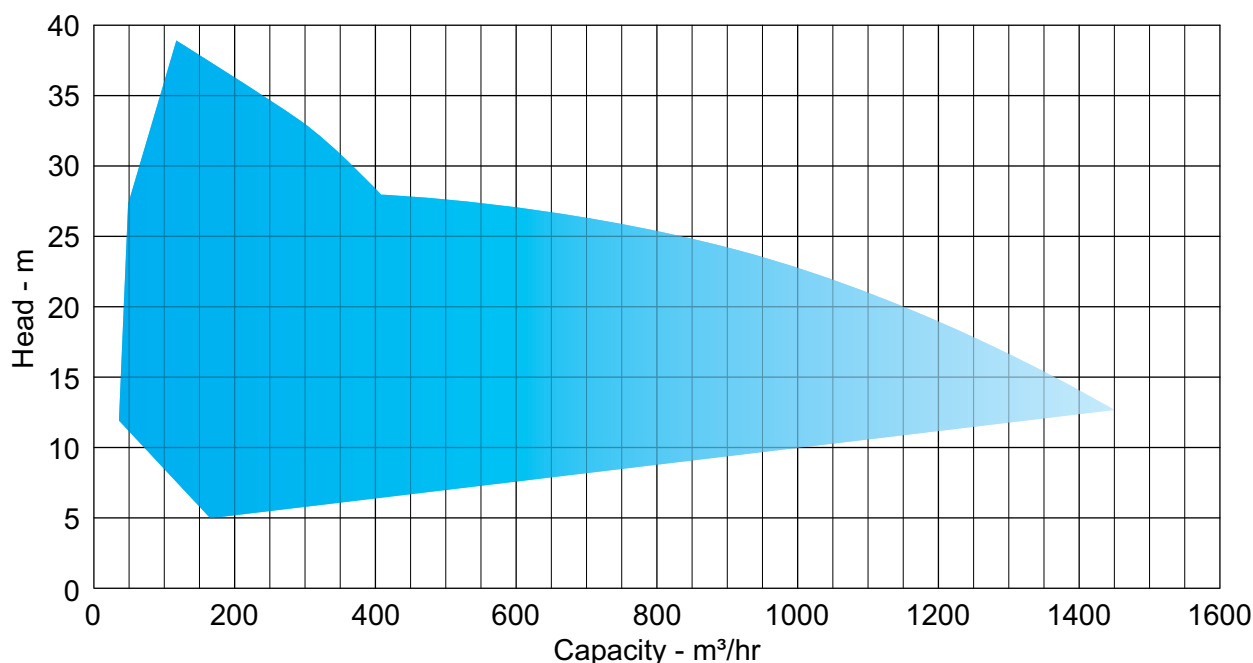
Available in vertical configuration for reliable operation in heavy duty sump applications. The shaft is supported along its entire length by anti-friction bearings in an oil bath formed by the pump column. The lower shaft section is supported by its own independent powerframe to limit deflection at the seal regardless of pump length.

**A** Oil bath lubrication of bearings and mechanical seal.

**B** Hard faced mechanical seal specifically designed for handling tough solids. Seal is set screw driven, has no exposed springs to jam up, and features self-aligning faces.



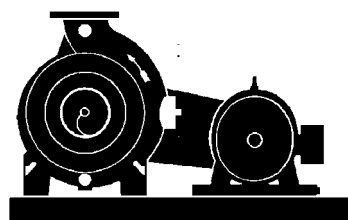
## ■ Selection Charts



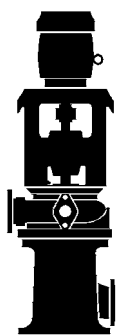
## ■ Configurations



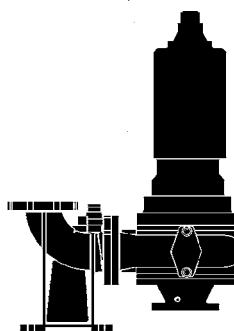
Direct Drive



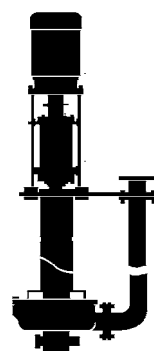
V-Belt Drive



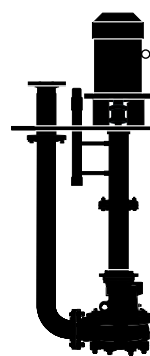
Vertical Dry Pit



Submersible



Vertical Cantilever



Vertical Line Shaft

## ■ About Ebara Corporation and Hayward Gordon

Established as a Japanese pump manufacturer in 1912, **EBARA Corporation** has developed businesses in the fields of fans and blowers, chillers, environmental plants, and the precision machinery industry. In October 2022, they acquired the Hayward Gordon Group to expand their product portfolio with Hayward Gordon's heavy-duty products.

**Hayward Gordon** encompasses three industry-leading brands in the pump and mixer market: Hayward Gordon, Sharpe Mixers, and Scott Mixers. The Company is a leader in solids handling pumps for water and wastewater treatment and has been offering one of the broadest lines of industrial and sanitary mixers in North America for more than six decades. The company operates facilities in Halton Hills, ON, Canada (Toronto area) and Adelanto, CA, USA.

### Dealer



**EBARA** PUMPS AUSTRALIA PTY. LTD

1 Jackstaff Court  
Bayswater North, Vic. 3153  
Ph: 03 9761 3033

ACN 090 963 572  
ABN 81 090 963 572

[sales.epa@ebara.com](mailto:sales.epa@ebara.com)

[www.ebara.com.au](http://www.ebara.com.au)